

Collet Chucks

Low-profile



5C & 16C Pull Back Power Collet Chucks



Pull Back Action

The gripping pull-back action to actuate the collet chuck means the work piece will be moved slightly in the Z-Axis. This is normally acceptable for first operation work and the work piece position can easily be determined with a facing cut.

Problem Free Installation

Klamp collet chucks are provided with mounting bolts and a custom machined drawtube connector allowing you to start using the Klamp collet chuck straight out of the box.

Quick & Easy Mounting

Klamp collet chucks mount directly to the lathe spindle or use a precision adaptor plate to ensure a consistent mounting without the need for correction. The precision fit of the Klamp collet chuck enhances the rigidity of the overall system. The need for adjustment is minimal, meaning less machine down-time.

Long Service Life

All Klamp collet chucks are case hardened and ground optimising the rigidity, strength and durability.

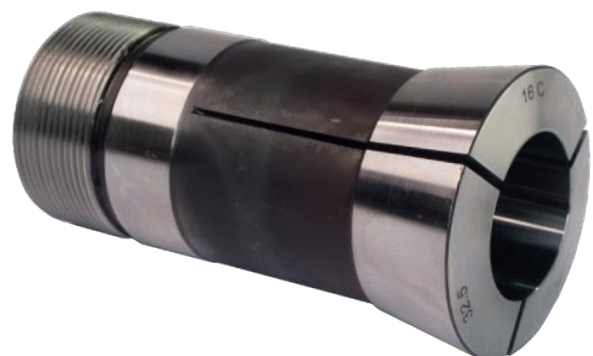
High Speed

Direct mount design ensures high concentricity that is suitable for higher speed operations that are not appropriate for conventional 3-jaw chuck due to the negative effects of centrifugal force.

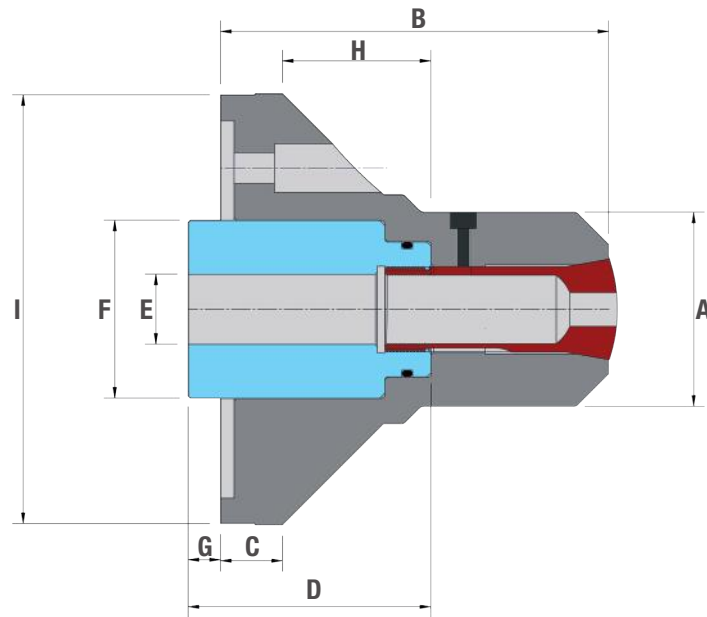
Low Profile

Small nose diameter to provide excellent tool clearance.

Suitable for 5C/16C Collet Types



5C & 16C Pull Back Power Collet Chucks



KLAMP Type	DEL5C			DEL16C		
Mounting	Z140	A5	A6	Z170	A5	A6
Part Number	DEL5C-Z140	DEL5C-A5	DEL5C-A6	DEL16C-Z170	DEL16C-A5	DEL16C-A6
Spring Collet Type	5C			16C		
Spring Collet Gripping Range *	Minimum	1			2	
	Maximum	27			42	
Spring collet increments	0.5			0.5		
A	72			85		
B	139	141		157	152	160
C	23	18	19	18.5	18	19
D	90		98	84.5		92.5
E	M60 x 2.0		M75 x 2.0	M60 x 2.0		M75 x 2.0
F	66		83	66		83
G Maximum	32	18		18	10	18
G Minimum	31	17		17	9	17
H	55		62	54.5	49.5	56.5
I	159	135	170	190	135	170
Pull Back Ratio	1:3			1:3		
Max. input force	kN			24		
Max. Speed	min ⁻¹			6000		
Net Weight	kg			11		
Matching Kitagawa Cylinders	S1246 SS1246 SR1146			S1246 SS1246 SR1146		

5C & 16C Collet Chuck Collet Options

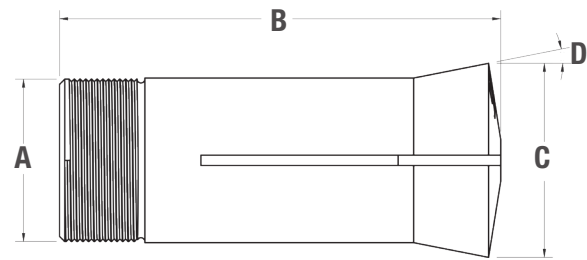


5C Collets – Type 0123 16C Collets – Type G119

- Round, Hexagon or Square types available
- Smooth gripping surface only
- 0.5mm sizes available upon request

Dimensions (Metric)

Part No.	A	B	C	D
5C	31.75	83.40	37.30	10°
16C	48	110.50	57.50	10°



Gripping Diameter	5C - Type 0123 for DEL 5C			16C - Type G119 for DEL 16C		
	Round	Hexagon	Square	Round	Hexagon	Square
1mm	5C-R01	-	-	-	-	-
2mm	5C-R02	-	-	16C-R02	-	-
3mm	5C-R03	-	-	16C-R03	-	-
4mm	5C-R04	-	-	16C-R04	-	-
5mm	5C-R05	5C-X05	5C-S05	16C-R05	16C-X05	16C-S05
6mm	5C-R06	-	5C-S06	16C-R06	-	16C-S06
7mm	5C-R07	5C-X07	5C-S07	16C-R07	16C-X07	16C-S07
8mm	5C-R08	5C-X08	5C-S08	16C-R08	16C-X08	16C-S08
9mm	5C-R09	-	-	16C-R09	-	-
10mm	5C-R10	5C-X10	5C-S10	16C-R10	16C-X10	16C-S10
11mm	5C-R11	-	-	16C-R11	16C-X11	-
12mm	5C-R12	5C-X12	5C-S12	16C-R12	16C-X12	16C-S12
13mm	5C-R13	-	-	16C-R13	16C-X13	-
14mm	5C-R14	5C-X14	5C-S14	16C-R14	16C-X14	16C-S14
15mm	5C-R15	-	-	16C-R15	16C-X15	16C-S15
16mm	5C-R16	5C-X16	5C-S16	16C-R16	16C-X16	16C-S16
17mm	5C-R17	-	-	16C-R17	16C-X17	-
18mm	5C-R18	5C-X18	5C-S18	16C-R18	16C-X18	16C-S18
19mm	5C-R19	-	-	16C-R19	16C-X19	-
20mm	5C-R20	5C-X20	-	16C-R20	16C-X20	16C-S20
21mm	5C-R21	-	-	16C-R21	-	-

Gripping Diameter	5C - Type 0123 for DEL 5C			16C - Type G119 for DEL 16C		
	Round	Hexagon	Square	Round	Hexagon	Square
22mm	5C-R22	5C-X22	-	16C-R22	16C-X22	16C-S22
23mm	5C-R23	-	-	16C-R23	-	-
24mm	5C-R24	-	-	16C-R24	16C-X24	-
25mm	5C-R25	-	-	16C-R25	16C-X25	16C-S25
26mm	5C-R26	-	-	16C-R26	16C-X26	-
27mm	5C-R27	-	-	16C-R27	16C-X27	-
28mm	-	-	-	16C-R28	-	-
29mm	-	-	-	16C-R29	-	-
30mm	-	-	-	16C-R30	16C-X30	-
31mm	-	-	-	16C-R31	-	-
32mm	-	-	-	16C-R32	16C-X32	-
33mm	-	-	-	16C-R33	-	-
34mm	-	-	-	16C-R34	-	-
35mm	-	-	-	16C-R35	16C-X35	-
36mm	-	-	-	16C-R36	-	-
37mm	-	-	-	16C-R37	-	-
38mm	-	-	-	16C-R38	-	-
39mm	-	-	-	16C-R39	-	-
40mm	-	-	-	16C-R40	-	-
41mm	-	-	-	16C-R41	-	-
42mm	-	-	-	16C-R42	-	-

Emergency Collet with soft face and pilot hole 3mm diameter is available both for the 5C and 16C Type – Part No. **5C-EMERGENCY / 16C-EMERGENCY**

Data required to manufacture drawtube actuator

Check which model is required

Fig. 1

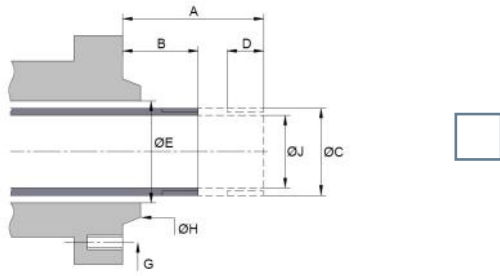


Fig. 2

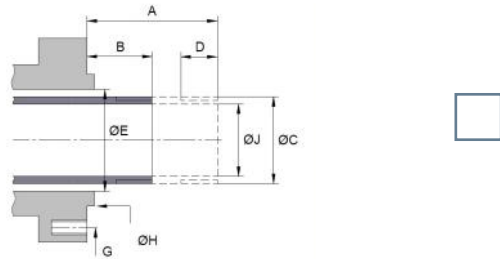


Fig. 3

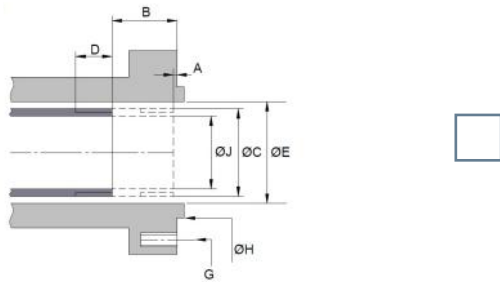
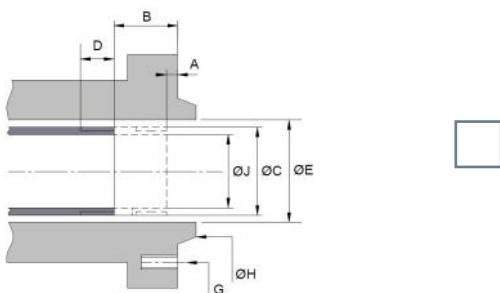


Fig. 4



A) Forward position of (drawtube from spindle face)

B) Backward position of (drawtube from spindle face)

C) Thread diameter form and pitch

State if RH or LH and external or internal

D) Operative length of full thread

E) Spindle bore diameter

State if taper

G) Fixing details. Thread size =

PCD = _____ QTY = _____

Spacing = _____

J) Drawtube internal diameter

American spindle mount

State type

Straight spindle mount

State diameter

Drawtube Connector / Machine Spindle Information

Machine Make:

Model:

Year:

Chuck Make:

Model:

Serial Number:

Cylinder Make:

Model:

Serial Number:

Contact Name:

Position:

Company Name:

Address:

Postal Code/ZIP:

Country:

Telephone:

Fax:

Email:

Website:

EUROPE

KITAGAWA EUROPE LTD. (UK)

t +44 1725 514 010 f +44 1725 514 001
e export@kitagawaeurope.com

KITAGAWA EUROPE GmbH (Germany)

t +49 210 212 37800 f +49 210 212 37869
e info@kitagawaeurope.de

KITAGAWA EUROPE (Czech Republic)

t +420 603 856 122
e michal.prokes@kitagawaeurope.de

KITAGAWA EUROPE (Hungary)

t +36 30 510 3550
e gabor.molnar@kitagawaeurope.de

KITAGAWA EUROPE (Poland)

t +48 32 749 59 18
e Lukasz.tomanek@kitagawaeurope.de

KITAGAWA EUROPE (Romania)

t +40 727 770 329
e roxana.tureac@kitagawaeurope.de

AMERICA

KITAGAWA – NORTHTECH INC.

t +1 847 310 8787 f +1 847 310 9484

ASIA

KITAGAWA PVT LTD. (India)

t +91 80 2976 5200 f +91 80 2976 5205
e sales@kitagawaindia.com

KITAGAWA IRON WORKS CO., LTD. (Japan)

t +81 847 40 0526 f +81 847 450 8911

KITAGAWA IRON WORKS CO., LTD. (China)

t +86 21 6295 5772 f +86 21 6295 5792

KITAGAWA CO., LTD. (Thailand)

t +66 2 712 7479 f +66 2 712 7481

DEAMARK LIMITED (Taiwan)

t +886 2 2393 1221 f +886 2 2395 1231

KITAGAWA CO., LTD. (Korea)

t +82 2 2026 2222 f +82 2 2026 2113

MIDDLE EAST

LOMAS MIDDLE EAST (U.A.E)

t +971 6 551 6551

OCEANIA

DIMAC TOOLING PTY. LTD. (Australia)

t +61 3 9561 6155 f +61 3 9561 6705

Unit 1, The Headlands, Downton, Salisbury, Wiltshire, SP5 3JJ, UK

www.kitagawa.global/en

Borsigstrasse 3, 40880 Ratingen, Germany

www.kitagawa.global/de

Purkyňova 125, 621 00 Brno, Czechia

www.kitagawa.global/cz

Déry T. u. 5. H-9024 Gyor

www.kitagawa.global/hu

44-240 Zory, ul. Niepodleglosci 3, Poland

www.kitagawa.global/pl

Heliului 15, Bucharest 1, 013991, Romania

www.kitagawa.global/ro

301 E. Commerce Dr, Scaumburg, IL. 60173, USA

www.kitagawa.us

Plot No. 15, 4th Phase, Bommasandra Industrial Area, Bommasandra
Jigani Link Road, Bangalore - 560 099

www.kitagawa.global/in

77-1 Motomachi, Fuchi-shi, Hiroshima-pref. 726-8610, Japan

www.kitagawa.com

Room 1315 13F Building B, Far East International Plaza,
No. 317 Xian Xia Road, Chang Ning, Shanghai, 20051, China

9th FL, Home Place Office Building, 283/43 Sukhumvit, 55Rd.
(Thonglor 13), Klongtopn-Nua, Wattana, Bangkok 10110, Thailand

No. 6, Lane 5, Lin Sen North Road, Taipei, Taiwan

www.demark.com/tw

803 Ho, B-Dong, Woolim Lion's Valley, 371-28 Gasan-Dong,
Gumcheon-Cu, Seoul, Korea

www.kitagawa.co.kr

Lomas ME FZE, Unit Q3-107, SAIF Zone, PO Box 121499, Sharjah, UAE

www.kitagawa.global/ae

61-65 Geddes Street, Mulgrave, Victoria, 3170 Australia

www.dimac.co.au